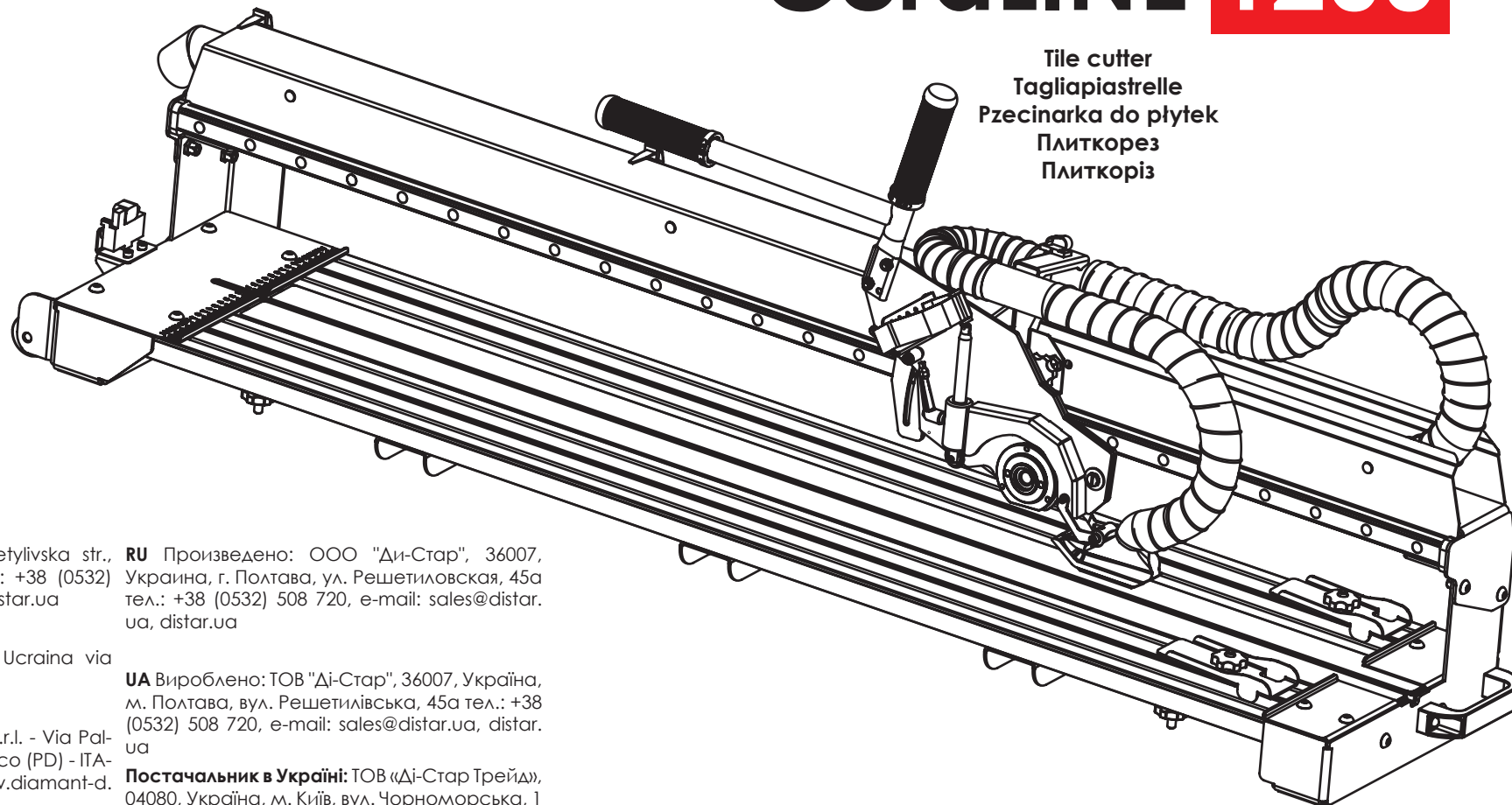


CeraLINE 1200

Tile cutter
Tagliapiastrelle
Pzecinarka do płytek
Плиткорез
Плиткоріз



EN Produced: "Di-Star" Ltd, Reshetylivska str., 45a, Poltava, Ukraine, 36007 tel.: +38 (0532) 508 720 e-mail: sales@distar.ua, distar.ua

RU Произведено: ООО "Ди-Стар", 36007, Украина, г. Полтава, ул. Решетилловская, 45а тел.: +38 (0532) 508 720, e-mail: sales@distar.ua, distar.ua

IT Prodotto: DiStar S.r.l., Poltava, Ucraina via Reshetylivska, 45A.

Tel.: +38 (0532) 508 720

Importatore in Italia: Diamant-D s.r.l. - Via Palladio, 40 - 35010 San Giorgio in Bosco (PD) - ITALY Telefono +39 049 5996755 www.diamant-d.com, info@diamant-d.com

UA Вироблено: ТОВ "Ді-Стар", 36007, Україна, м. Полтава, вул. Решетилівська, 45а тел.: +38 (0532) 508 720, e-mail: sales@distar.ua, distar.ua

Постачальник в Україні: ТОВ «Ді-Стар Трейд», 04080, Україна, м. Київ, вул. Чорноморська, 1 тел.: +38 (050) 356-78-26, e-mail: distar@distar.kiev.ua

PL Wyprodukowane: Di-Star Sp. z o.o. 36007, Poltawa, Ukraina, ul. Reshetylivska, 45a tel.: +38 (0532) 508 720, e-mail: sales@distar.ua, distar.ua

Importer w Polsce/Importer in the Europe: Di-STAR.EU Sp. z o.o. ul. Grunwaldzka 70h, 36-020 Tuczyn, PL

NIP: 8133834116, office@di-star.eu, distar.tools

EN

ORIGINAL OPERATING MANUAL FOR THE CERALINE-1200 DEVICE

IT

MANUALE OPERATIVO ORIGINALE PER IL DISPOSITIVO CERALINE-1200

PL

ORYGINALNA INSTRUKCJA OBSŁUGI URZĄDZENIA CERALINE-1200

RU

ОРИГИНАЛ ИНСТРУКЦИИ ПО ЭКСПЛУАТАЦИИ УСТРОЙСТВА CERALINE-1200

UA

ОРИГІНАЛ ІНСТРУКЦІЇ З ЕКСПЛУАТАЦІЇ ПРИСТОСУВАННЯ CERALINE-1200

Content

Symbols, abbreviations	5
Work safety techniques	5
General description of the device	6
Device diagrams/schematics	7
Installation, configuration, operation	7
Device maintenance	9
Storage conditions	9
Technical data	9
Complete set	9
Disposal	10
Warranty obligations	10

DEAR CONSUMER!

Thank you for choosing TM "MECHANIC" products! The high quality of raw materials and components, the appropriate selection of parts, the use of modern technologies, and precise control ensure that our products are durable and suitable for long-term use. To maintain these qualities, please follow the recommendations in this brochure. This is the only way to ensure the quality of your "MECHANIC" device.



ATTENTION! "Di-Star" constantly works on improving its products and reserves the right to make design changes for enhancement and modernization without notifying consumers, as long as it does not violate usage guidelines!

SYMBOLS AND ABBREVIATIONS:



This symbol, which emphasizes the importance of safety rules, means "caution," "careful," "warning," or "danger." Ignoring this warning may result in an accident for the user or others. To avoid risks of injury, fire, or electric shock, always follow the provided instructions.



Recycling symbol for disposal



Read all safety rules and instructions



Eye, hearing, and respiratory protection



EAC mark (Eurasian Conformity)



CE Certification (European conformity - marking indicating that the product meets safety standards and requirements of the European Union).



WORK SAFETY

1. Before starting work, carefully read this Manual and the Manual for the electrical equipment and diamond tools you are using!
2. Follow the safety rules when using this device, diamond tools, and equipment!
3. Before performing any activities (moving, tool replacement, etc.) with power-driven machines, disconnect the plug or remove the battery from the device.
4. Inspect the device, diamond tools, and equipment visually before each use to check for any potential damage.
5. Never use damaged equipment, diamond tools, or devices!
6. Before use, ensure there are no cracks in the material.
7. Use the device only for its intended purpose!
8. Never exceed the maximum load for which the device is designed!
9. The surface of the material to be transferred must be smooth; texture is permissible if it does not interfere with the suction cup's adherence. No protruding elements or transitions from one plane to another are allowed!
10. Do not wear loose clothing, and make sure that unsecured clothing elements or jewelry cannot get caught in the moving parts of the device!
11. Do not use the device if you are tired, sick, or under the influence of medications that slow reaction time!
12. Damaged, improperly installed, or misused diamond tools can pose a significant danger!

13. Work in protective glasses with side shields (or a mask with a full protective screen), a respirator, earmuffs, and gloves. Always wear protective footwear (and an apron, if necessary).

14. The workpiece must be securely fastened. Check the material for cracks, as these may lead to material destruction during operation or installation!



CAUTION! Sharp edges of the material may cause injury and damage property.

15. Clean the device using compressed air and/or a damp cloth!



CAUTION! Diamond tools can heat up significantly during work. Do not touch them until they cool down.

GENERAL PRODUCT DESCRIPTION

The CeraLINE-1200 device is designed for straight cuts at a 90-degree angle on materials such as ceramic tiles, gres, porcelain stoneware, and others, with a length not exceeding 1200 mm and a thickness of 12 mm. The drive for cutting with a diamond disc uses standard angle grinders (AG) 115–125.

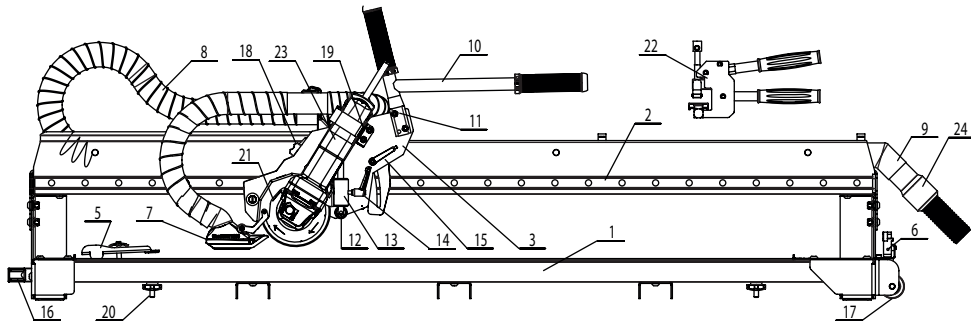
Additionally, the device allows for:

CUTTING WITH CARBIDE ROLLERS FOLLOWED BY BREAKING USING A TILE BREAKER

Positioning the cut using a laser pointer and ruler.

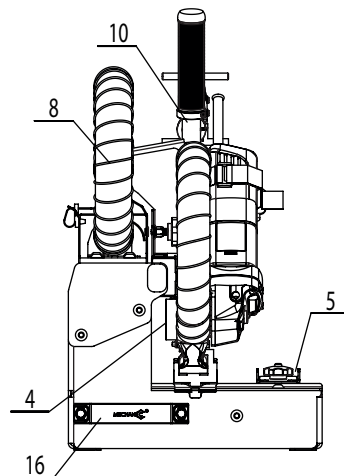
Reducing dust exposure by connecting a vacuum cleaner.

DEVICE DIAGRAMS/SCHEMATICS



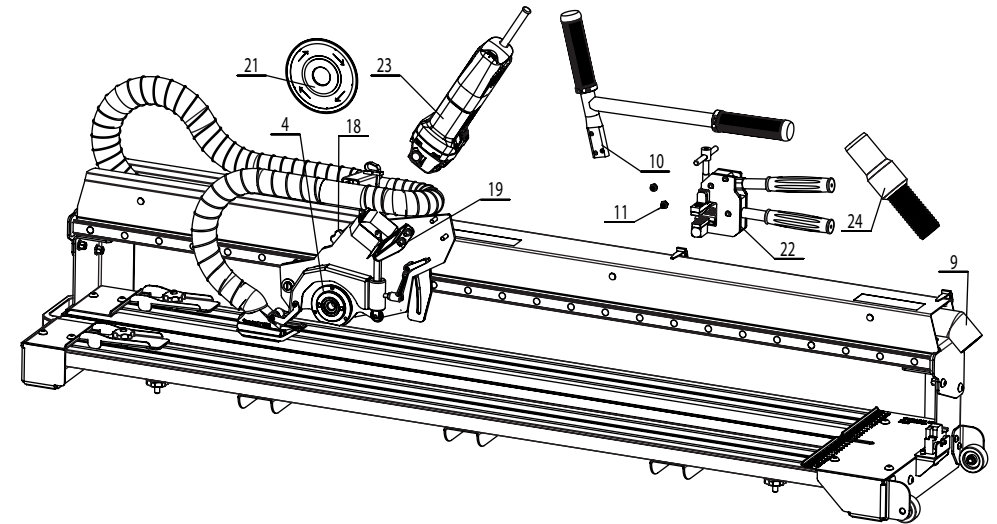
Components (see Figure 1):

- Frame
- Beam with a guide
- Moving carriage
- Bearing unit for fixing the disc and angle grinder
- Clamp for securing the processed material
- Laser pointer
- Dust outlet
- Dust removal circuit
- Vacuum cleaner connector
- Handle for moving the carriage and applying cutting force
- Handle fastening
- Carbide roller cutter
- Cutter mounting element
- Cutter fixing screw with a carbide roller
- Screw for fixing the position and angle of the moving carriage



- Handle for moving the device
- Wheels for device transportation
- Handle for fixing the transport position of the carriage
- Support stop for fixing the angle grinder housing
- Fastening to a table or other base
- Diamond cutting tool
- Tile breaker
- Angle grinder (not included)
- Vacuum cleaner hose (not included)

INSTALLATION, CONFIGURATION, AND OPERATION



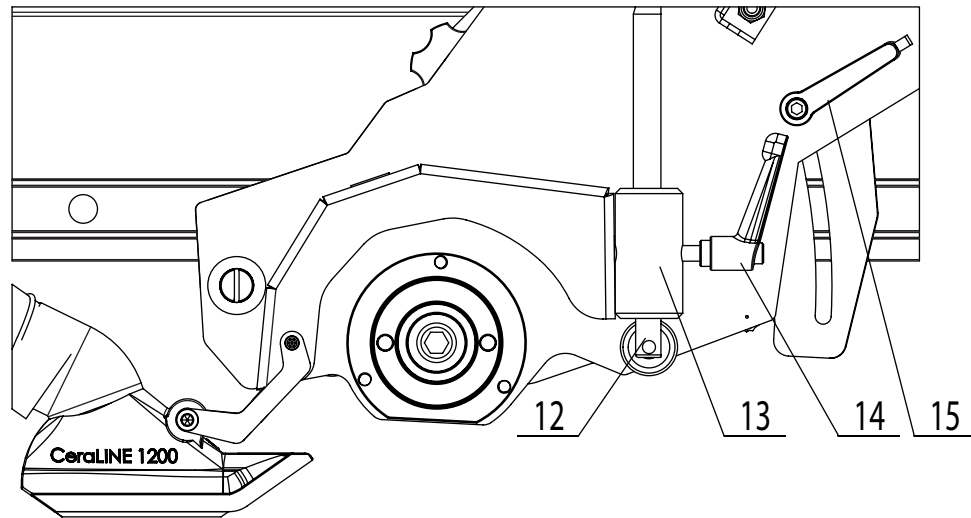
ASSEMBLY AFTER RECEIVING THE DEVICE:

- Attach the handle (10) and secure it with nuts (11).
- Check the completeness of the set.
- Inspect the device for integrity and mechanical functionality.

INSTALLING THE DIAMOND TOOL AND ANGLE GRINDER:

- DISCONNECT THE ANGLE GRINDER FROM THE POWER OUTLET OR REMOVE THE BATTERY.
- Remove the standard angle grinder guard.
- Install the diamond tool (21) in the bearing unit (4) in its designated place.
- Hold the angle grinder (23) with one hand, place it in the bearing unit (keep the support flange; remove the clamping nut), and secure the diamond tool (21) with an 8 mm hex key from the opposite side.
- Secure the angle grinder housing (23) on the support stop (19) using a textile strap.
- Ensure that the diamond tool (21) does not contact any parts of the CeraLINE-1200.
- To reduce dust exposure, connect the vacuum cleaner (24) to the connector (9) of the dust removal circuit.
- Secure the angle grinder cable in the clamps.

INSTALLING THE CARBIDE ROLLER CUTTER:



The carbide roller cutter is included in the set.
Installation, replacement, or flipping follows the same steps described in the "Configuration and Operation" section of this manual.

GENERAL CONFIGURATION

Visually inspect the device to ensure proper assembly and installation of additional elements.
Choose a comfortable position and angle for the handle (10) and secure it with two nuts (11).
Adjust the laser pointer (6) with two screws, set the diamond tool (21) in the bearing unit (4), move the carriage to its extreme positions, and visually align the laser beam with the periphery of the diamond layer.

For a diamond tool (21) of a different thickness or flange design, visually check and, if necessary, reconfigure the laser pointer (6).

Inspect the slot where the disc passes for debris or large solid particles that could harm the user, tool, or angle grinder.

Before starting work, unscrew the carriage fixing screw (18).

OPERATION WITH A DIAMOND TOOL

Ensure there is no debris on the flange surface of the bearing unit (4).

Install the diamond tool (21) and angle grinder (23) (refer to "Installation").

Verify that the laser pointer (6) aligns with the cutting direction of the diamond tool (21).

Conduct a test cut, moving only from left to right.

Wear protective clothing and goggles.

Place the material to be cut on the tile cutter frame (1), resting it against the right stop.

Align the marked line with the laser pointer (6), considering the laser beam width and the relative position of the laser to the diamond tool (21).

Secure the material using clamps (5).

Move the carriage to the upper position.

Plug the vacuum cleaner into the power supply.

Turn on the angle grinder.

Release the fixing screw (15).

Gradually lower the carriage plate to the desired cutting depth.

Secure the position and angle of the carriage plate with the fixing screw (15).

Holding the UPPER handle, begin gradually moving the tool to cut the material.

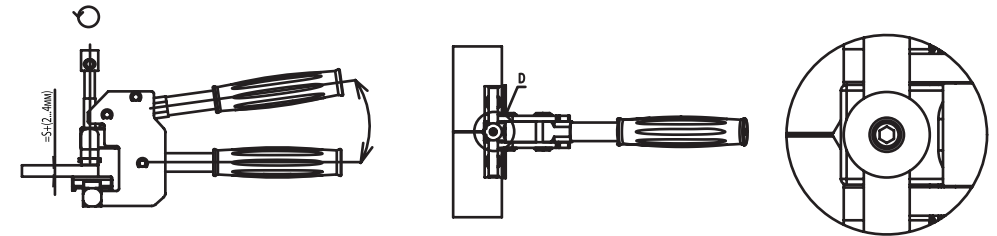
After finishing the cut, release the fixing screw (15) and move the carriage plate to the upper position.

TURN OFF the vacuum cleaner and angle grinder (23).

Release the clamps (5).

Repeat the above steps for subsequent cutting cycles.

TILE BREAKER USAGE



Set the gap (Δ) between the breaker plates to 2–4 mm greater than the thickness of the material being processed using the rotary handle.

Place the material to be processed between the breaker jaws.

Align the breaker perpendicularly to the fracture line.

Position the breaker at the edge of the material being processed.

Center the fracture line along the middle of the breaker, using the guide arrow on the upper jaw.

Hold one part of the material with one hand, ensuring the free part is not restricted by the frame of the device.

Use your other hand to squeeze the breaker handles within your physical capacity. Note that the material may separate after the first compression.

Repeat the action for the opposite side of the fracture line. Ensure the material separates.

Maintenance of the Device

Before operation, ensure the integrity of the device and the functionality of threaded connections and moving elements.

Clean the guide from dust and dirt.

After use, clean contaminated surfaces.

If necessary, coat the guide surface with silicone lubricant.

Never use solvents or aggressive chemicals for cleaning!

STORAGE CONDITIONS

Store the device at a temperature of -15°C to $+40^{\circ}\text{C}$ with a relative humidity of no more than 80%.

Avoid direct sunlight and sudden temperature changes that may cause condensation.

TECHNICAL DATA

Net Weight: 29,300 g $\pm 10\%$.

Dimensions without packaging: 1602×306×532 mm.

Dimensions with packaging: 417×360×1670 mm.

Made of black metal, contains plastic dust removal elements, a rubber vacuum connector, rubber inserts to prevent material slipping, and is powder-coated. Contains no harmful substances. Service life: Unlimited.

COMPLETE SET

CeraLINE-1200 device – 1 pc. Diamond cutting disc – 1 pc. Tile breaker – 1 pc. Material clamps – 2 pcs. Hex key 3 mm – 1 pc. Hex key 4 mm – 1 pc. Hex key 8 mm – 1 pc. Combination wrench S=10 – 1 pc. Instruction manual – 1 pc.



DISPOSAL

At the end of its service life, recycle the device following the applicable legislation of your country.

WARRANTY OBLIGATIONS

Claims regarding product quality are accepted based on a completed claim form and the presence of the defective product.

Claims are considered only if the manufacturer's recommendations for use were followed.

The manufacturer is not responsible for the product's performance if the buyer independently altered its design.

The manufacturer reserves the right to make minor design changes not reflected in this manual to improve the product or its operating conditions.